



16001



16001



16003 b  
Fiore - A23 212



16003 b



16004

16004 b  
Fiore - A23 210



16004 b



16005



16005





16006 a



16006 a



16007



16007



16008 a  
Sopragonna 16008-2



16008 a  
Sopragonna 16008-2



16009



16009





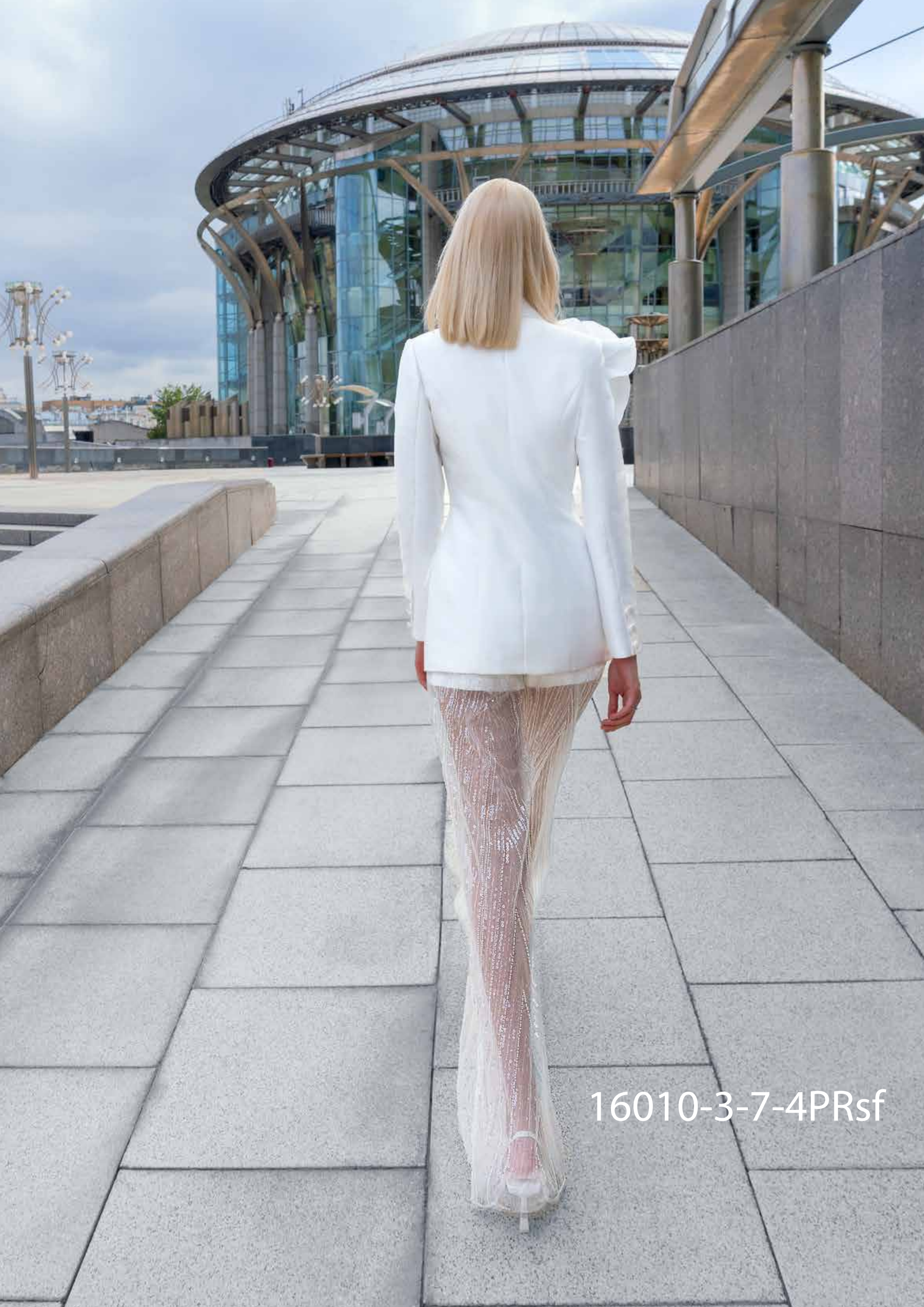
16010-3-7-4  
Fiore - A23 213



16010-3-7-4



16010-3-7-4PRsf  
Fiore - A23 213



16010-3-7-4PRsf



16011



16011



16012



16012





16013

16013





16014



16014



16015



16015



16016



16016





16017



16017

16018



16018





16019



16019



16020



16020





16021



16021



16022



16022



16023



16023



16024



16024





16025 a



16025 a



16025 c



16025 c



16026



16026



16027



16027





16028



16028



16029-3-2 a



16029-3-2 a



16029-3-2 b



16029-3-2 b



16030-3-2 a



16030-3-2 a